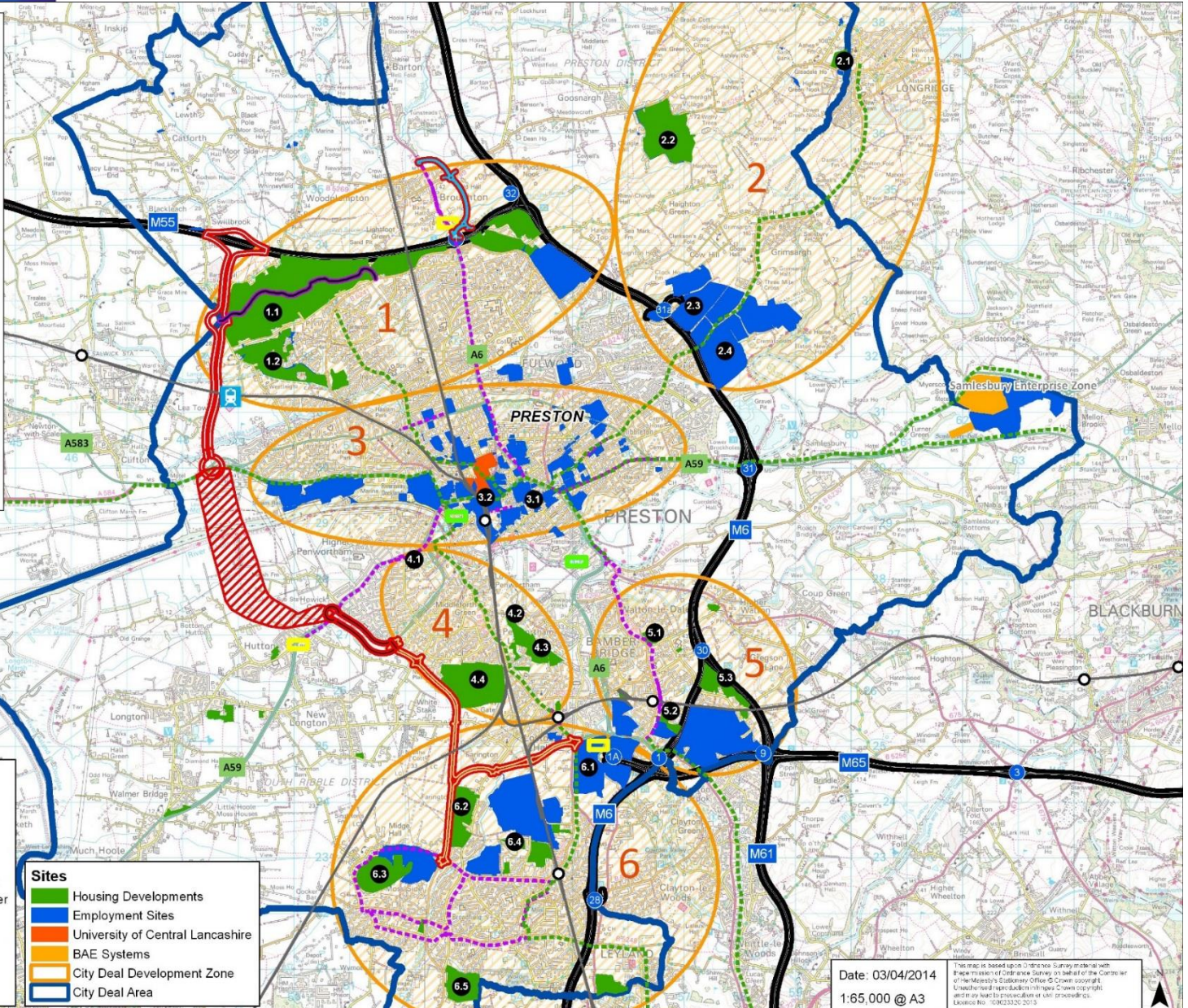


- 1 - North West Preston**
 - 1.1 - North West Preston
 - 1.2 - Cottam Hall
- 2 - North East Preston**
 - 2.1 - Land off Whittingham Road
 - 2.2 - Whittingham Hospital
 - 2.3 - Preston East
 - 2.4 - Red Scar
- 3 - Preston City Centre**
 - 3.1 - City Centre Housing Sites
 - 3.2 - City Centre Employment Sites, Horrocks Quarter, Market's Quarter, Winckley Square, Central Business District
- 4 - Penwortham and Lostock Hall**
 - 4.1 - Cop Lane Food Store
 - 4.2 - Vernon Carus Site
 - 4.3 - Lostock Hall, Gasworks
 - 4.4 - Pickerings Farm
- 5 - Bamber Bridge**
 - 5.1 - Former Arla Foods Premises
 - 5.2 - Wesley St Mills
 - 5.3 - Brindle Road
- 6 - Leyland and Cuerden**
 - 6.1 - Cuerden
 - 6.2 - Heatherleigh and Moss Lane
 - 6.3 - Moss Side Test Track
 - 6.4 - Grasmere Avenue and Wheelton Lane
 - 6.5 - Altcar Lane



- Infrastructure**
-  Potential New Railway Station
 -  Preston East West Link Road
 -  Penwortham Bypass
 -  Broughton Bypass
 -  Potential Major Transport Investment
 -  A582 South Ribble Western Distributer
 -  Preston Western Distributer
 -  Park and Ride Existing
 -  Park and Ride Potential
 - Public Transport Priority Corridors
 - Public Realm Improvement Corridor

- Sites**
-  Housing Developments
 -  Employment Sites
 -  University of Central Lancashire
 -  BAE Systems
 -  City Deal Development Zone
 -  City Deal Area





10 year
vision for Preston
and South Ribble



£434m
infrastructure
investment into
Preston and
South Ribble



The construction of
1,000,000 sq m of
employment space



Creation of 20,000
private sector jobs



Creation of a new
motorway junction
and major roads



17,000 new
homes



New schools, open
spaces and health
facilities

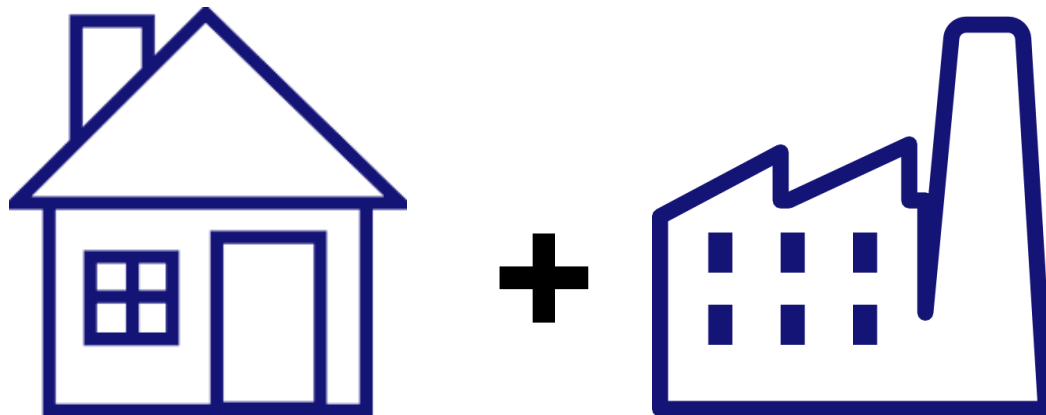


Better public
transport, more
road space and
reduced congestion



Stimulating £1bn of
economic growth in
the region

City Deal: How Does the Model Work?



=

£

=

Infrastructure

APPENDIX 1

Year 5 performance dashboard 2018/19

HOUSING



36 SITES CURRENTLY UNDER CONSTRUCTION

PUBLIC AND PRIVATE SECTOR INVESTMENT

Combined total
£130.5m

COMMERCIAL FLOOR SPACE



NOTABLE PROGRESS:

Eastway – Commencement of development on a number of sites (with a strong market demand for retail), plus a distribution warehouse and care home.
Bluebell Way – Outline planning application made for a car showroom, plus a key land acquisition by Barnfield/Henry Boot Developments to bring forward a large employment site in the short-medium term.
Preston East Expansion Area Land – discussions ongoing with Homes England to bring forward the site and undertake due diligence
Red Scar – Planning consent for a new energy plant.

UClan – continued progress on the delivery of the Masterplan, with the expected completion of the Engineering Innovation Centre
Queen's Retail Park – construction underway of additional retail units
Park Hotel, East Cliff – planning application consented
Shankly Hotel – construction underway
Porsche car showroom, Preston – construction underway
Momentum, South Rings – preparations being made for final build out of units
Samlesbury Aerospace Enterprise Zone – start on-site made for BAE Systems' Advanced Manufacturing Facility



INFRASTRUCTURE UPDATE

Preston Western Distributor – Public Inquiry into CPO took place in 2018 with decision notice confirmed by the Secretary of state. LCC formally agreed to support the commitment made by the City Deal Executive to fund the local contribution of the North West Preston Roads Programme subject to the full approval of the final business case by the LEP and DfT to release the Government funding.
South Ribble Western Distributor – A582 dualling – A strategic outline business case (SOBC) is being prepared for this scheme for submission to the Transport for the North for

inclusion in the schemes put forward for funding under Major Road Network proposals.
Penwortham Bypass – work is progressing well on the construction of the new road and establishment of the new school playing fields.
Broughton Corridor – Good progress made with regard to the village centre public realm upgrade works.
Fishergate Phase 3 – Planning permission received for the Western Apron public realm.

GENERAL ACTIVITY

Work on the city deal review has progressed throughout 2018/19. Final proposals expected in October 2019.



CITY DEAL SO FAR

Commercial floorspace
63,913.5m²

Houses
4,991

Jobs
14,870

JOBS

193

JOBS associated with commercial floorspace completions

321

JOBS associated with infrastructure projects

1,129

JOBS associated with employment at existing commercial premises

67

JOBS created through business support activities



SKILLS AND EMPLOYMENT

The City Deal 'Bridge the Gap' activity has gone from strength to strength.

Over the 2018/19 academic year the programme has been delivered to year 9 and year 10 pupils at a total of 17 schools across the City Deal area.

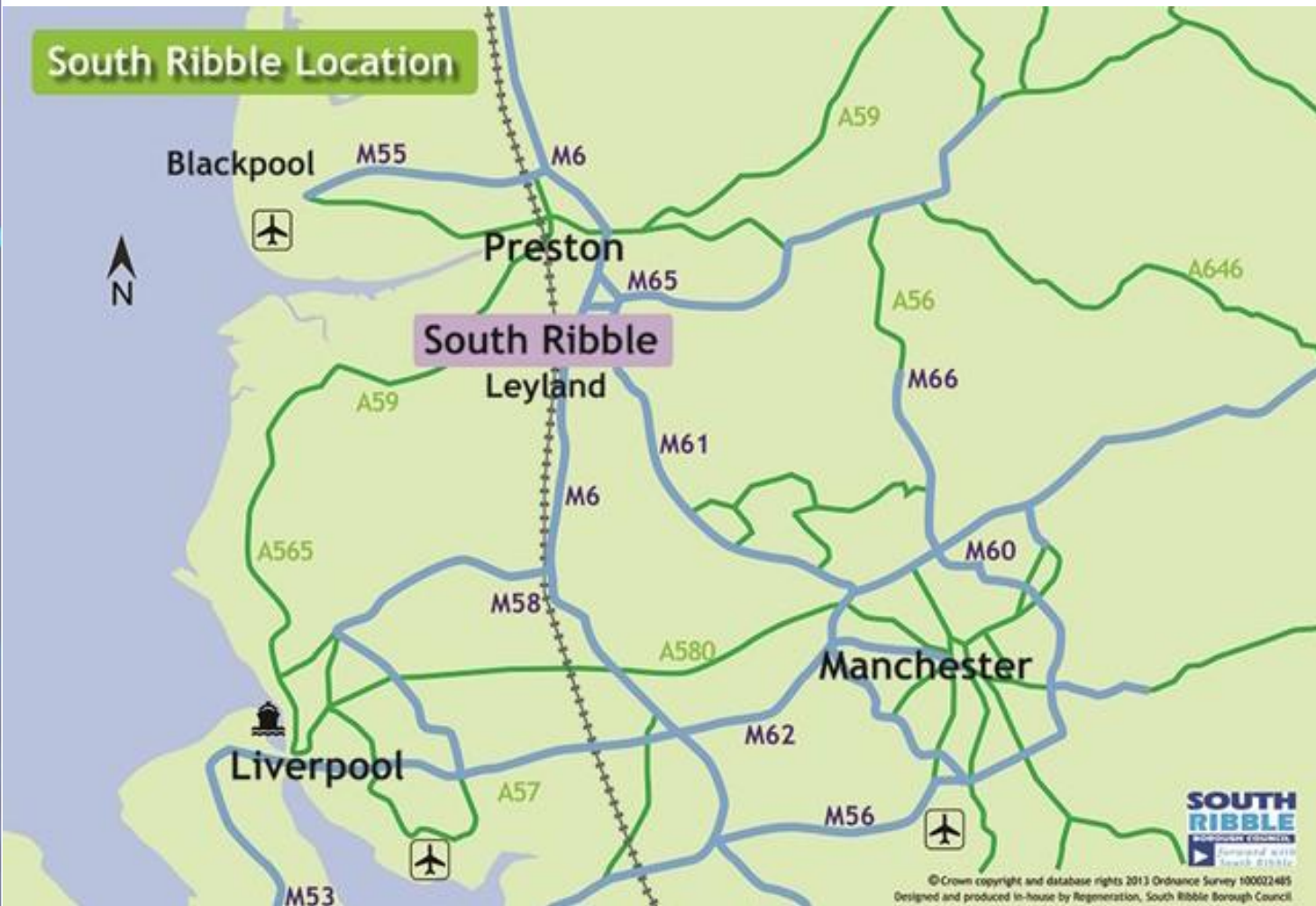


Central Lancashire Local Plan & City Deal a South Ribble Council Perspective

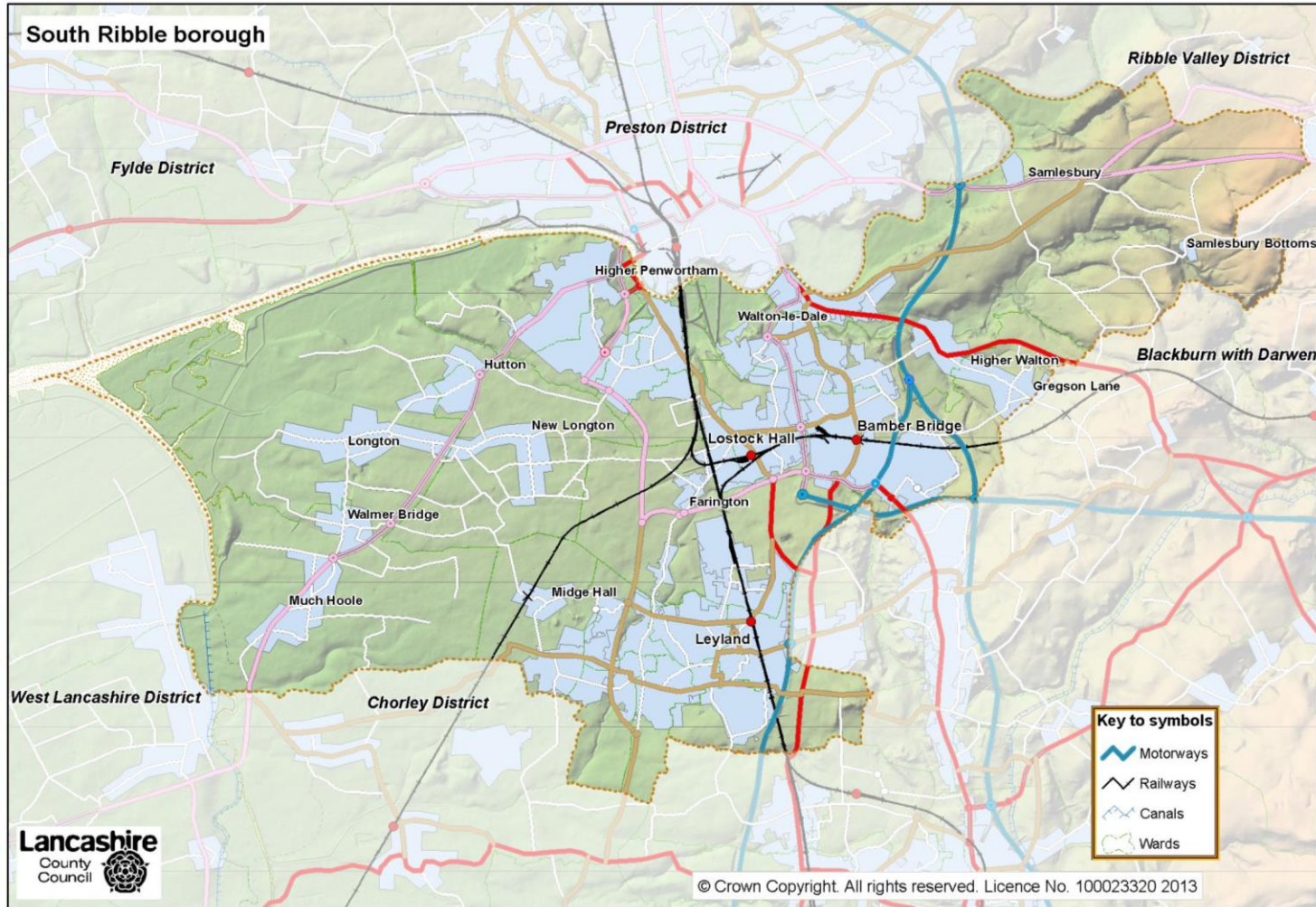




South Ribble Location

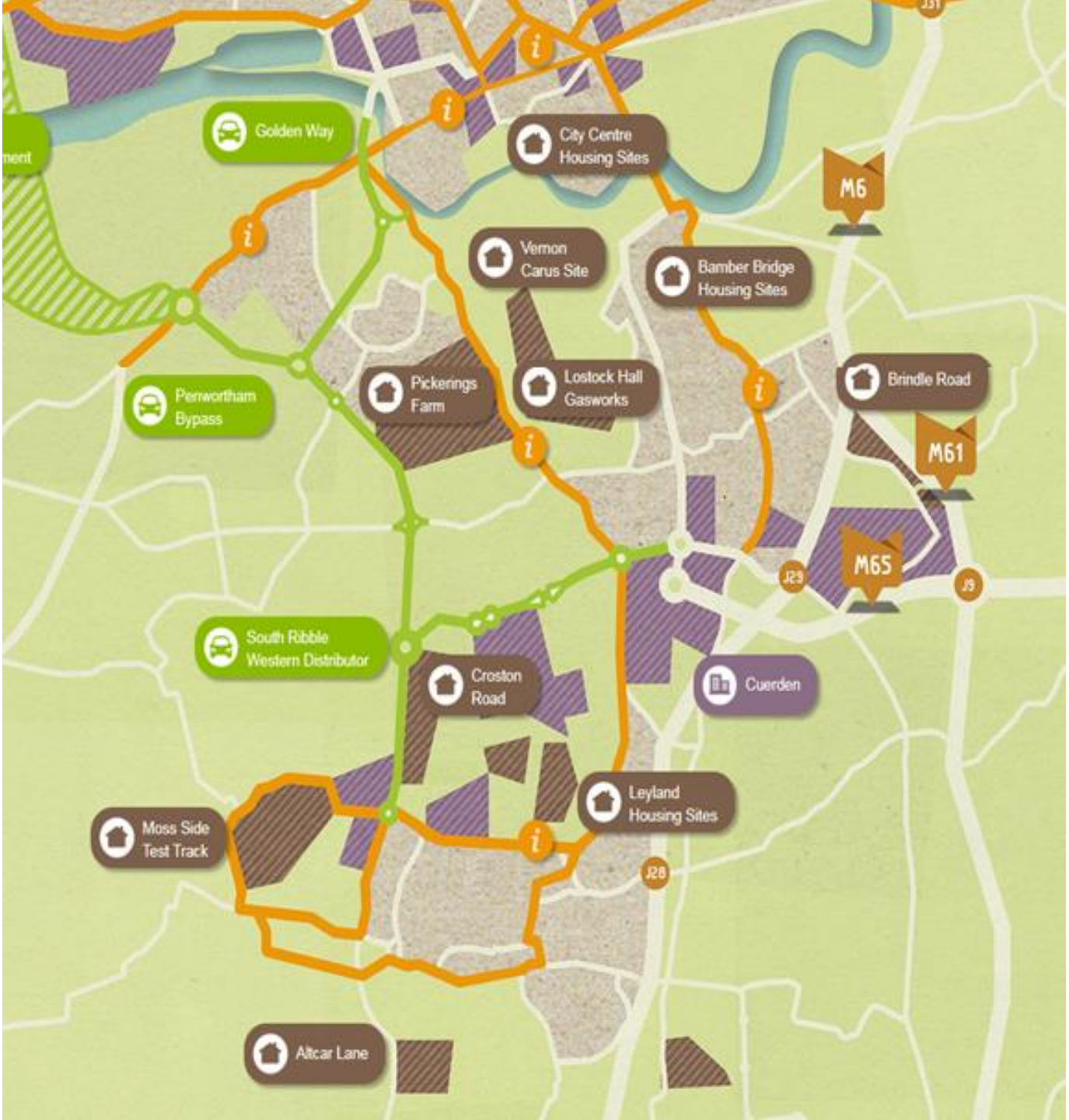


© Crown copyright and database rights 2013 Ordnance Survey 100022485
Designed and produced in-house by Regeneration, South Ribble Borough Council





CITY DEAL
Preston, South Ribble & Lancashire



SOUTH RIBBLE
BOROUGH COUNCIL
forward with South Ribble



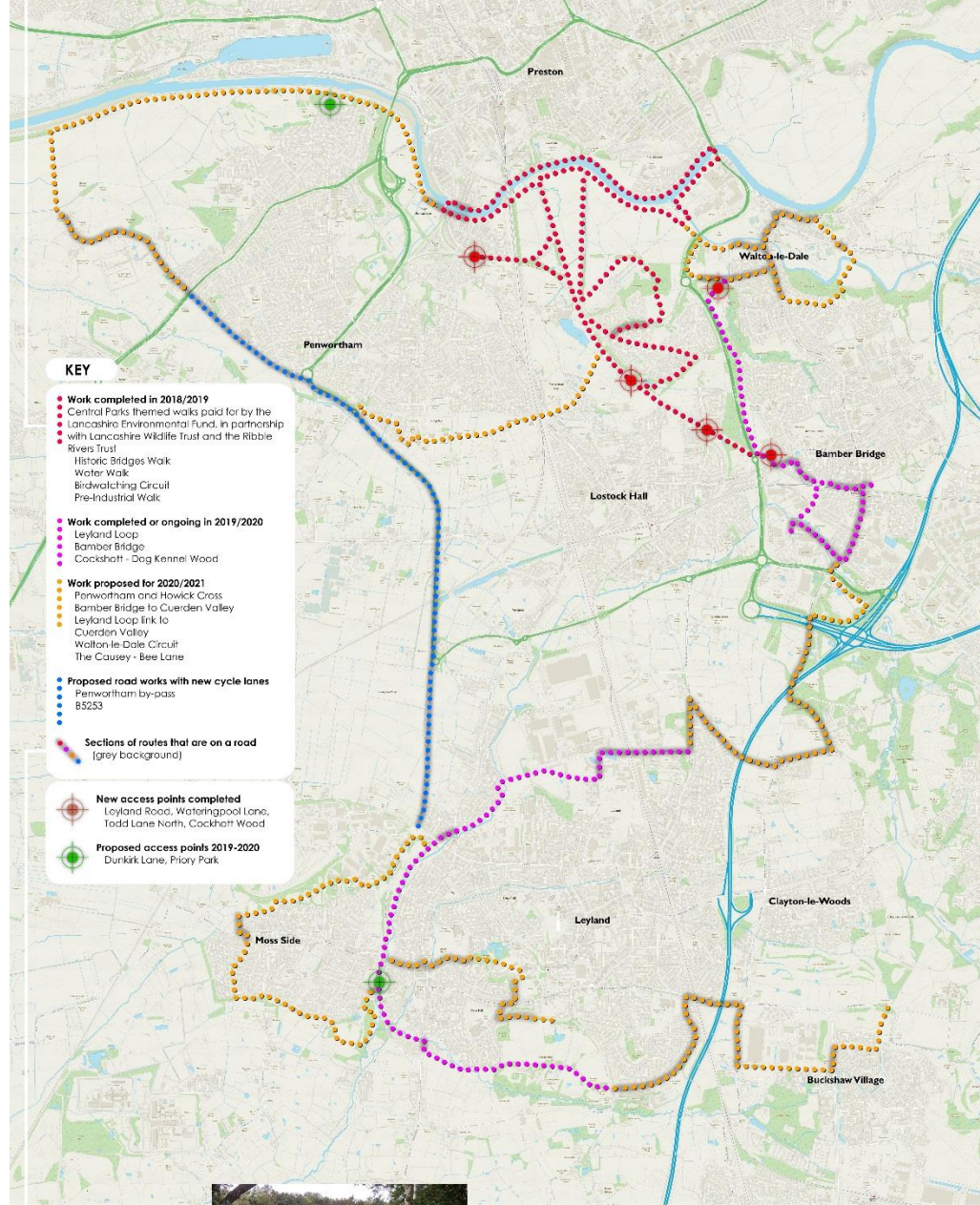
*“ A healthy and happy
community, flourishing together
in a safer and fairer borough ”*

- **Health, Wellbeing and Safety**
- **Excellence, Investment and
Financial Sustainability**
- **Place, Homes and Environment**
- **Our People and Communities**



Green Links - A South Ribble Way



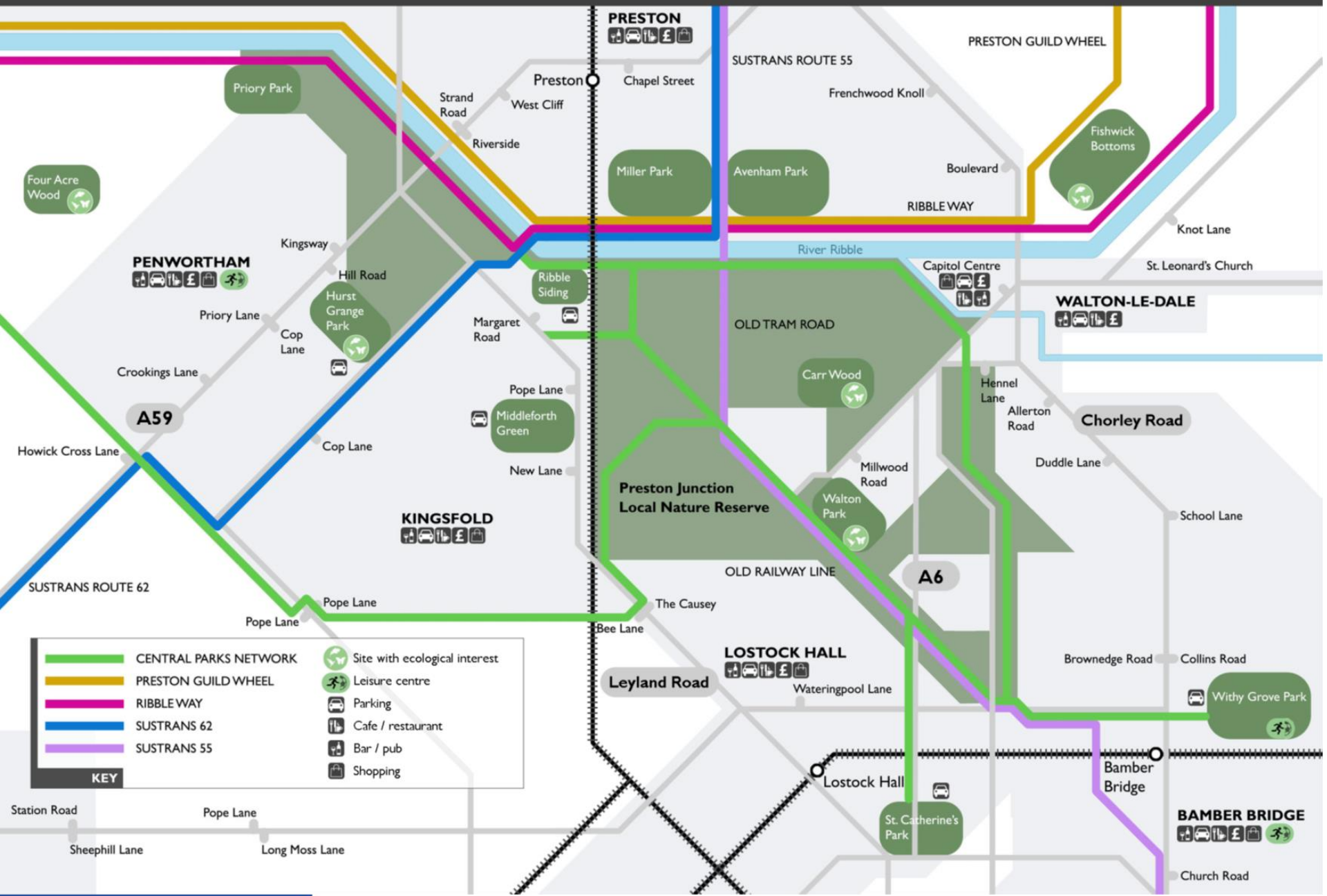


GREEN LINKS NETWORK

upgrading public rights of way
creating better access for all users
improving signage and information.

A safe, sustainable network connecting
where we live, work and play.

LOCAL AREA



Four Acre Wood

Priory Park

PENWORTHAM

Hurst Grange Park

PRESTON

Preston

Miller Park

Avenham Park

PRESTON GUILD WHEEL

Fishwick Bottoms

A59

KINGSFOLD

Preston Junction Local Nature Reserve

WALTON-LE-DALE

Chorley Road

A6

LOSTOCK HALL

BAMBER BRIDGE

	CENTRAL PARKS NETWORK		Site with ecological interest
	PRESTON GUILD WHEEL		Leisure centre
	RIBBLEWAY		Parking
	SUSTRANS 62		Cafe / restaurant
	SUSTRANS 55		Bar / pub
KEY			Shopping

Station Road
Sheephill Lane
Pope Lane
Long Moss Lane

Church Road

Air Quality

5 x AQMA's :

- Penwortham
- Walton le Dale
- Lostock Hall
- Bamber Bridge
- Leyland

Air Quality Action Plan:

- Approved 2018
- Key actions relevant to Planning

Climate Emergency Declaration

Housing: Meeting Needs and High Quality



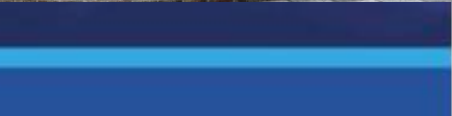
LOVELL

Leyland Town Centre





Leyland Town Centre



Employment and Skills

Central Lancashire SPD Aims:

- To increase local employment opportunities by helping local businesses to improve, grow and take on more staff
- To help businesses find suitable staff and suppliers, especially local ones
- To improve the skills of local people to enable them to take advantage of the resulting employment opportunities
- To help businesses already located in Central Lancashire to grow and to attract new businesses into the area

Employment and Skills Statements required for developments:

- 1,000 sq m commercial floorspace
- 30 housing units

South Ribble Apprentice Factory



Powering our future workforce

- **Best performing public sector organisation in Lancashire 2018**
- **With 100% pass rate and positive outcomes - the council's apprenticeship scheme is recognised as one of the best**
- **Levy funds used to upskill existing staff and train newly recruited apprentices up to post-graduate level**
- **South Ribble Borough Council identified a gap in the availability of impartial information, advice and guidance for residents and businesses**
- **Ambassadors for apprenticeships**
- **Developing the integration of learning and work experience through 45 day industry placements**



South Ribble Apprentice Factory

- An independent and impartial strategic body that can act as an authoritative voice on apprenticeships in South Ribble and engage with regional and national institutions to deliver South Ribble needs
- Providing impartial, local information, advice & guidance in schools and colleges
- Supporting businesses to create and manage new apprenticeships and linking them with the best training providers
- Helping to re-skill, up-skill, attract, develop and retain high calibre staff into the future for the borough



Powering our future workforce





*“ A healthy and happy
community, flourishing together
in a safer and fairer borough ”*

Jonathan Noad MRTPI AssocRICS

Director of Planning and Property

South Ribble Borough Council

T: 01772 (62) 5206

A: Civic Centre, West Paddock,
Leyland, PR25 1DH

W: www.southribble.gov.uk

